

APOLLO PORTABLE LAMP

DESIGN BY STUDIO 0405

HAY

APOLLO PORTABLE LAMP

Designed by STUDIO 0405, the Apollo Lamp is a portable and free-standing lamp for indoor and outdoor use that creates space and intimacy wherever it is placed. Hand-made in a single piece of opal glass, its rounded curves and unified silhouette are a contemporary interpretation of the classic lamp form. The light source and rechargeable battery are concealed within the shade, illuminating the upper part to provide a warm, ambient glow. Apollo's portability and deliberate simplicity of design make it suitable for using in many rooms in a domestic environment, as well as cafés, patios and other outdoor spaces.



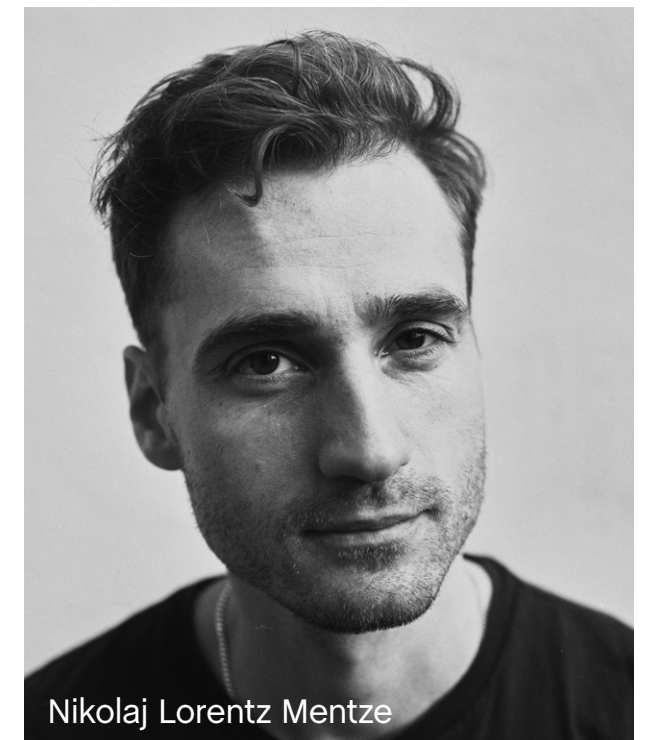


STUDIO 0405

Nikolaj Lorentz Mentze is a Danish designer and the owner of Copenhagen-based architecture and design firm STUDIO 0405. He graduated at Kolding School of Design in Denmark, specialising in Product Design, before establishing STUDIO 0405 in 2015.

STUDIO 0405 is a design studio working in the intersection between space and object. It explores the culture of design's historic, technical and aesthetic properties and how it can be qualified and further developed in an object.

The studio collaborates with other creatives such as artists, photographers and craftsmen on design projects with a wide range of clients. For HAY, Nikolaj Lorentz Mentze has created the Apollo Portable Lamp.



Nikolaj Lorentz Mentze

- APOLLO PORTABLE LAMP -







Please use below link to download packshots, lifestyle photos
and other sales material of Apollo Portable Lamp

IMAGE BANK

Please use below link for order
placement and further information

HAYB2B.COM



APOLLO PORTABLE LAMP

PRODUCT FACT SHEET



APOLLO PORTABLE LAMP

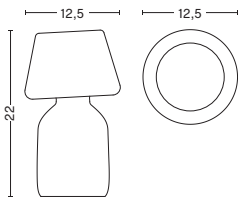
DESIGN BY STUDIO 0405, 2022

Designed by STUDIO 0405, the Apollo Portable Lamp is a portable and free-standing lamp for indoor and outdoor use that creates space and intimacy wherever it is placed. Handmade in a single piece of opal glass, its rounded curves and unified silhouette are a contemporary interpretation of the classic lamp form. The light source and rechargeable battery are concealed within the shade, illuminating the upper part to provide a warm, ambient glow. Apollo's portability and deliberate simplicity of design make it suitable for using in many rooms in a domestic environment, as well as cafés, patios and other outdoor spaces.

HIGHLIGHTS

- Part of a progressive and technologically advanced lighting collection.
- Elegant and versatile portable lamp in opal glass, suitable for both indoor and outdoor use.
- Each lamp is handmade and therefore has a unique, one-of-a-kind quality.
- CE and ETL approved for both EU and US markets.
- Includes replaceable LED light source ensuring a life span of at least 25,000 hours of use.
- Integrated touch step dimmer switch with three standard settings on the base of the lamp.
- Minimum 10 hours of use before the battery requires recharging via USB.
- IP44 outdoor rated.
- Qualified for contract use.
- Suitable for both indoor and outdoor environments.

DIMENSIONS



WIDTH 12,5 CM | 4.92"

DEPTH 12,5 CM | 4.92"

HEIGHT 22 CM | 8.66"

MATERIALS

SHADE & BASE

Mouth blown opal glass.

CORD

PVC micro USB cable (100 cm).

BASE INSERT

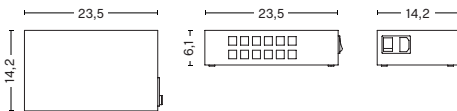
Injection moulded ABS.

The Apollo Portable Lamp is handmade and every lamp might vary slightly in size or shape.

OPTIONS

A USB charging station able to charge 24 Apollo Portable Lamps simultaneously.

Designed for settings where multiple Apollo Portable Lamps are used on a regular basis.



COLOUR & FINISH

Please note that the colour codes are indicative.



WHITE OPAL
GLASS

TECHNICAL SPECIFICATIONS

| LIGHT SOURCE* | DIMMABLE | POWER SUPPLY | IP | BATTERY | SWITCH |
|-------------------------------------|----------|-------------------------------------------|----|--------------------------------------------------|-------------------------------------------------------|
| LED G4, 3W, 220lm, 2800K warm white | Yes | 220-240V AC at 50-60Hz Micro USB Cable | 44 | 3,6V Lithium-ion battery. 10h per full charge | Touch step dimmer. (Integrated in the base insert) |

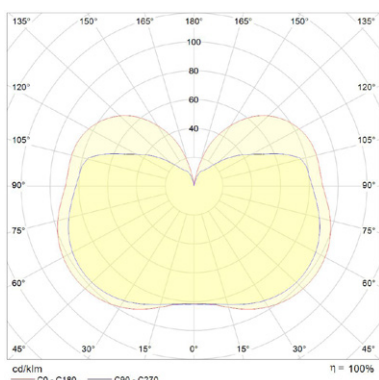
*Bulb included in the packaging. For replacements of LED bulbs, please contact HAY or an authorised dealer.

TEST SPECIFICATION OUTPUTS*

| FLUX (LUMENS) | CCT (KELVIN) | CRI (1-100) |
|---------------|-------------------|-------------|
| 220lm | 2800K, warm white | 80 |

*Photometrics and the test specification shown is taken using the included LED bulb fitted in the production luminaire.

PHOTOMETRICS



CERTIFICATES

CE APPROVED

This product has been assessed and complies with the essential requirements of the relevant European directives.



Tested according to the following European EN IEC standards which relate specifically to electrical lighting products including:

- EN 55015:2013 (radio disturbance)
- EN 61547:2009 (EMC immunity)
- EN 61000-3-2:2014 (EMC compatibility)
- EN 61000-3-3:2013 (EMC compatibility)
- EN 60598-2-4:1997 (portable luminaires)
- EN 60598-1:2015 (general requirements)
- EN 62493:2010 (human exposure to EMC)

COUNTRY OF ORIGIN

China

DOWNLOADS

Packshots and lifestyle photos, 2D / 3D files, care and maintenance, instructions, test certificates, product fact sheets, and product presentations are available in our Image Bank at hay.com.

[LINK TO IMAGE BANK](#)